

c·a

ceramica · antique

CATALOGO 2025

Acerca de Nosotros

Todos nuestros productos son fabricados semi artesanalmente, cada una de las colecciones son diseñadas desde su idea original considerando diversos elementos como: pastas, esmaltes, procesos de formado y de quema, brindando a cada línea un carácter único.

Mientras que un proceso industrial puede manufacturar una pieza en menos de una hora, sin haber sido nunca trabajada por manos humanas, el proceso artesanal puede llegar a tomar hasta 20 días por pieza, dependiendo de su tamaño, proceso y complejidad. Por tanto, la diferencia entre una y otra es inmensa. Sin menospreciar los productos industriales, estos carecen del carácter, la personalidad y originalidad que siempre tendrán los productos artesanales. Nuestros artesanos utilizan procesos milenarios; no es fácil que la tecnología reemplace el resultado de la genialidad humana.

Debido a este proceso artesanal, cada pieza es única y la variación que existe en apariencia es inherente a su proceso de producción, lo que aumenta la belleza de nuestras colecciones.

INDICE

PAG.

→ 6TH AVENUE.....	01
→ ATMOS.....	08
→ PIETTA DONOVAN.....	13
→ ROBERT A.M. STERN.....	17
→ STUDIO MODERNE.....	26
→ TILT.....	34
→ VIBE.....	40
→ GEOMETRICA.....	46
→ TUILERIES.....	50
→ SPANISH.....	55
→ ANDALUCIA.....	60
→ ALHAMBRA.....	65
→ CITY BRICKS.....	74
→ KIVA.....	76
→ COLORES CUSTOM.....	79
→ FORMATOS CUSTOM.....	82
→ HAND PAINTED.....	84
→ RANGO DE PRECIOS 2025.....	86

6TH AVENUE™

By Walker Zanger



LOSETA



FIELD TILE
6" / 152 mm



FIELD TILE
4 X 12" / 101 X 305 mm



FIELD TILE
3 X 6" / 152 mm



FIELD TILE
2 X 6" / 50 X 152 mm



HEXAGON
5 3/8 X 6" / 137 X 152 mm



ELONGATED HEXAGON
2 1/2 X 6" / 64 X 152 mm

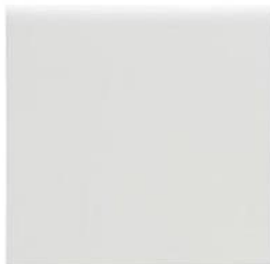
ACCESORIOS



BULLNOSE SHORT
6" / 152 mm



BULLNOSE LONG
6" / 152 mm



BULLNOSE
6" / 152 mm



DOUBLE BULLNOSE
6" / 152 mm



DOUBLE BULLNOSE
3" / 76 mm



ACCESORIOS



QUARTER ROUND
1 1/2 X 6" / 38 X 152 mm



BEAK



DEMI BULLNOSE
1/2" X 8"



STICK LINER
1/2 X 8 1/2" / 13 X 216 mm



RIDGE LINER
5/8 X 8 1/2" / 16 X 216 mm



RAIL MOLDING
2 3/16 8 1/2" / 56 X 216 mm



CORNICE MOLDING
3 3/4 X 8 1/2" / 95 X 216mm



BASE MOLDING
4 X 8 1/2" / 101 X 216 mm

MONTADO EN MALLA



COCOON MOSAIC
10 1/8 x 10" / 257 X 254 mm



SOFÍA MOSAIC
5 11/16 X 7 1/8" / 145 X 181 mm



JULIA MOSAIC
7 3/4 X 12 3/4" / 107 X 324 mm



BRICK MOSAIC
1 1/2 X 4" / 38 X 102 mm



CHEVRON MOSAIC
10 3/8 X 10" / 264 X 254 mm



CURVED CHEVRON MOSAIC
7 11/16 X 8 7/8" / 195 X 225 mm

MONTADO EN MALLA



1X6 MOSAIC
1 X 6" / 25 X 152 mm



HEXAGON MOSAIC
2" / 51 mm



PENNY ROUND MOSAIC
1 1/3" / 29mm



MUSEUM MOSAIC
10-1/2" X 11-1/4"

COLORES DE LÍNEA



WHITE GLOSS



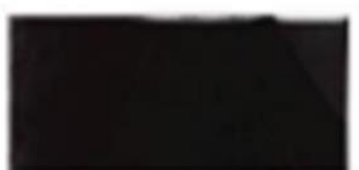
WHITE MATTE



CANVAS GLOSS



FOG GLOSS



INK MATTE



PEWTER GLOSS



FOG MATTE



PALE SKY GLOSS



FRENCH CLAY GLOSS



MARLIN BLUE GLOSS



JADE GLOSS



INK GLOSS



6th Avenue *by Walker Zanger*

LA EXQUISITA INTERSECCIÓN
DE CLÁSICO Y CONTEMPORÁNEO
EN MOSAICOS Y PIEZAS SENCILLAS
PERO SOFISTICADAS.

A high-magnification scanning electron micrograph (SEM) showing the intricate, three-dimensional lattice structure of a diamond. The image displays a complex network of interconnected, faceted crystalline regions. The surfaces of these facets are highly reflective, creating bright highlights and deep shadows that emphasize the sharp edges and geometric forms. The overall appearance is that of a highly ordered, porous-like structure. In the lower right quadrant, a white rectangular box with a thin black border contains the word "ATMOS" in bold, black, uppercase letters, indicating a specific area of interest or a label for the structure shown.

ATMOS

MONTADO EN MALLA



CHEV MOSAIC
11 3/8" X 11 6/8" | 288 X 298 mm



ARC MOSAIC
11 1/2" X 13 1/2" / 286 X 343 mm



PIKE MOSAIC
11 5/8" X 13 7/8" / 295 X 327 mm



OSSO MOSAIC
10 2/8" X 11 6/8" / 260 X 297 mm



FANE MOSAIC
9 3/8" X 13 7/8" / 180 X 350 mm



SCALA MOSAIC
11 1/8" X 11 7/8" / 286 X 305mm

LOSETA

FIELD TILE
5 X 12" / 127 X 305 mm

ACCESORIOS

DOUBLE BULLNOSE
5" / 127 mm



BULLNOSE SHORT
5 X 12" / 127 X 305 mm



BULLNOSE LONG
5 X 12" / 127 X 305 mm

COLORES DE LÍNEA



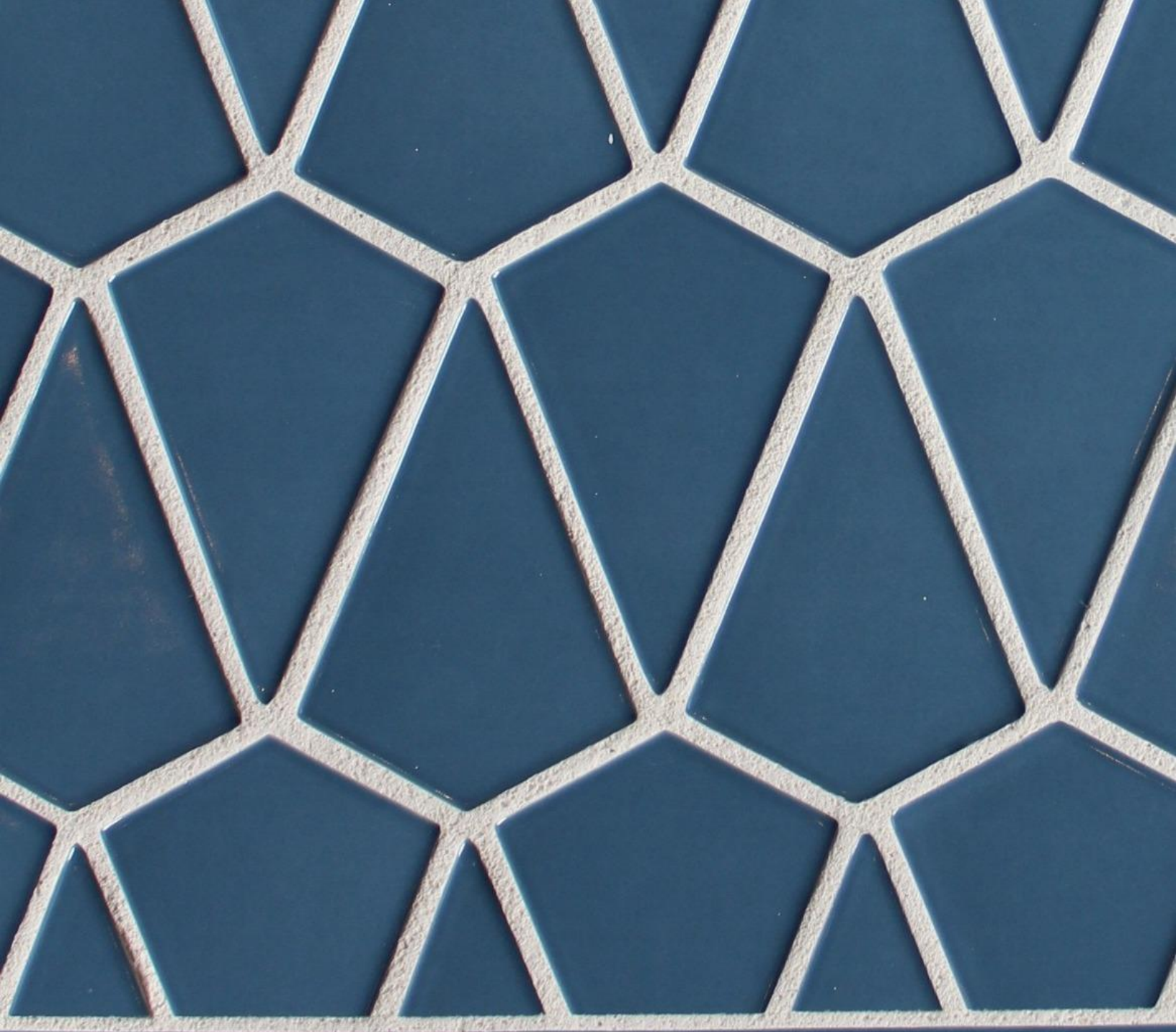
AURAE GLOSS



AETHER GLOSS



VAPOUR GLOSS



ATMOS

IMAGEN VERSÁTIL IDEADA SOBRE MOSAICOS DE FORMATO GRANDE, EN MODERNOS Y CONTEMPORÁNEOS ARREGLOS, Y COLORES QUE DAN UNA PERSONALIDAD ATREVIDA AL ENTORNO QUE SE DECORE.



PIETTA

DONOVAN

BY WALKER ZANGER

ACCESORIOS



DEMI RAIL
9/16" X 8" / 14 X 203 mm

LOSETA



MAROUBRA
3 3/8" X 6" / 86 X 152 mm



BRONTE
3" X 6 1/2" / 76 X 165 mm



ZED
3 1/4" X 6" / 83 X 152 mm



MATILDA
6" X 6" / 152 X 152 mm



BRICK
3 1/8" X 4 3/4" / 79 X 129 mm

COLORES DE LINEA



PAPERBARK GLOSS



WEDGETAIL GLOSS



LILLY PILLY GLOSS



CELESTE GLOSS



OPAL GLOSS



CHARETTE GLOSS



RIVER MINT GLOSS



SALTBUSH GLOSS



BANGALAY GLOSS





**ROBERT A.M.TM
STERN**

By ROBERT A.M. STERN

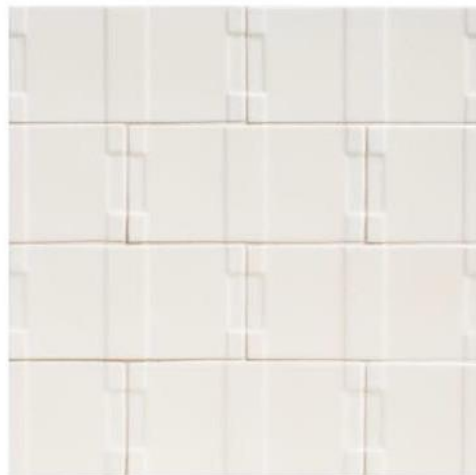
DECORATIVO



TREILLIS
4 X 4"



WAVE
3 X 6"



OTTO
3 X 6"



QUARTET PATTERN MOSAIC
6" x 12"



SHINGLE MOSAIC
8 7/8" x 8 7/8"

MONTADO EN MALLA

LOSETA



FIELD TILE
4 X 4"



FIELD TILE
3 X 6"



OVOLO
3 X 6"

ACCESORIOS



TRELLIS CORNER
4 X 4"



TRELLIS BORDER
4 X 4"



PETIT RAIL MOLDING
3/4 X 6"



CHAIR RAIL MOLDING
2 X 10"

ACCESORIOS



BEAK



QUARTER ROUND
1 X 6"



DOUBLE BULLNOSE
3 X 3"



BULLNOSE SHORT
3 X 6"



BULLNOSE LONG
3 X 6"



BULLNOSE
4 X 4"



DOUBLE BULLNOSE
4 X 4"

COLORES DE LÍNEA



SNOW MATTE



MAHATTAN MATTE



GAZEBO GLOSS



LINEN GLOSS



KHAKE GLOSS



OXFORD GLOSS



LEATHER GLOSS



DEEP SEA GLOSS



CAPE COD GLOSS

COLORES DE LÍNEA



FROST CRACKLE



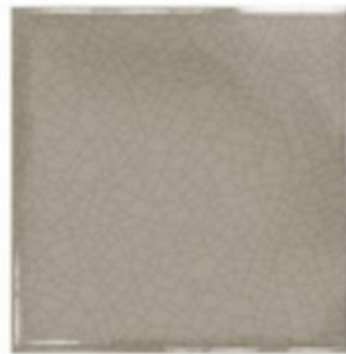
HORIZON CRACKLE



DUNE CRACKLE



IVORY CRACKLE



STONE CRACKLE

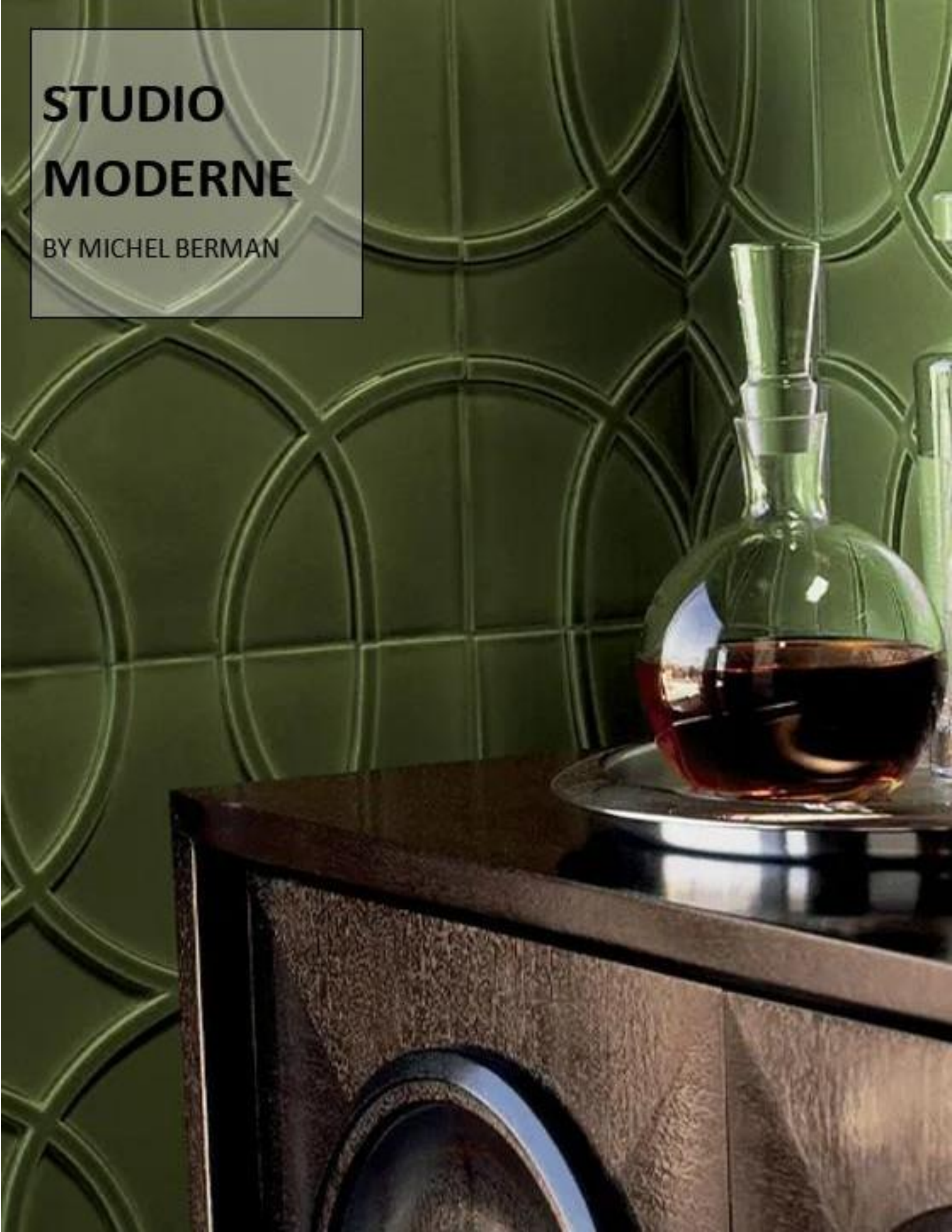


Robert A.M. Sterem

ELEGANTE Y PURA.
PROPUESTA DEL
AFAMADO DISEÑADOR
CON AZULEJOS
Y ACCESORIOS EN
TONOS NEUTROS,
RELIEVES Y TEXTURAS
INTRIGANTES.

STUDIO MODERNE

BY MICHEL BERMAN



LOSETA



FIELD TILE
4 1/2" X 5 3/4"
114 X 145 mm



FIELD TILE
4 1/2" X 11 1/2"
114 X 288 mm



FIELD TILE
6" X 10"
160 X 250 mm

ACCESORIOS



BULLNOSE SHORT
4 1/2" X 5 3/4"
114 X 145 mm



BULLNOSE SHORT
4 1/2" X 11 1/2"
114 X 288 mm



BULLNOSE SHORT
6" X 10"
160 X 250 mm



BULLNOSE LONG
4 1/2" X 5 3/4"
114 X 145 mm



BULLNOSE LONG
4 1/2" X 11 1/2"
114 X 288 mm



BULLNOSE LONG
6" X 10"
160 X 250 mm



DOUBLE BULLNOSE
RIGHT
4 1/2" X 5 3/4"
114 X 145 mm



DOUBLE BULLNOSE
RIGHT
4 1/2" X 11 1/2"
114 X 288 mm



DOUBLE BULLNOSE
RIGHT
6" X 10"
160 X 250 mm



DOUBLE BULLNOSE
LEFT
4 1/2" X 5 3/4"
114 X 145 mm



DOUBLE BULLNOSE
LEFT
4 1/2" X 11 1/2"
114 X 288 mm



DOUBLE BULLNOSE
LEFT
6" X 10"
160 X 250 mm

DECORATIVO

STUDIO MODERNE
By MICHAEL BERMAN



PETIT IMPERIAL PATTERN
4" X 4"
105 X 105 mm



IMPERIAL PATTERN
10" X 10"
250 X 250 mm



PARAMOUNT
15" X 15"
381 X 381 mm



DIPLOMAT
1 15/16" X 12"
49 X 305 mm



AMBASSADOR
2 1/2" X 12"
64 X 305 mm



DECORATIVO



MONTCLAIRE FLAT DECO
5 3/8" X 9 1/2"
137 X 241 mm



MONTCLAIRE RELIEF DECO
5 3/8" X 9 1/2"
137 X 241mm



MARQUIS PATTERN
7" X 8"
178 X 203 mm



RAMBLER DECO
7 1/2" X 6 3/4"
191 X 146 mm

ACCESORIOS



QUARTER ROUND
1" X 8"
25 X 203 mm



BEAK



STICK LINER
3/4" X 10"
19 X 250 mm



FUTURA RIDGE LINER
1" X 10"
25 X 250 mm



PAVILION RAIL MOLDING
1 1/2" X 10"
38 X 250 mm

PAVILION FRAME MOLDING CORNER



PAVILION FRAME MOLDING
OUTSIDE CORNER



PAVILION FRAME MOLDING



PAVILION FRAME MOLDING
CORNER



PAVILION CROW MOLDING
OUTSIDE CORNER



PAVILION CROW MOLDING



PAVILION CROW MOLDING
CORNER



PAVILION BASE MOLDING
OUTSIDE CORNER



PAVILION BASE MOLDING



ACCESORIOS

STUDIO MODERNE
By MICHAEL BERMAN



FUTURA CORNICE MOLDING
OUTSIDE CORNER



FUTURA CORNICE MOLDING



FUTURA CORNICE MOLDING
CORNER



FUTURA RAIL MOLDING
OUTSIDE CORNER



FUTURA RAIL MOLDING



FUTURA RAIL FRAME MOLDING
CORNER



FUTURA CROW MOLDING
OUTSIDE CORNER



FUTURA CROW MOLDING



FUTURA CROW MOLDING FRAME
CORNER



FUTURA BASE MOLDING
OUTSIDE CORNER



FUTURA BASE MOLDING



COLORES DE LÍNEA



ECRU GLOSS



COCONUT MATTE



JUTE GLOSS



MICA GLOSS



CLOVER GLOSS



MING BLUE GLOSS



WATER GLOSS



MOONSTONE GLOSS



SMOKE GLOSS



PLASTER GLOSS



STERLING GLOSS



Studio Moderne™ *by Michael Berman*

MAGNÍFICA Y ENVOLVENTE.
INNOVADORA COLECCIÓN DE MICHAEL BERMAN,
QUE SE CONVIERTE EN PUNTO FOCAL
DISTINTIVO DEL ESPACIO.



TILT

BY WALKER ZANGER

LOSETA



FIELD TILE 3" X 8 1/2"

ACCESORIOS



FACET BEAK



FACET QUARTER ROUND



BULLNOSE LONG 3" X 8 1/2"



DOUBLE BULLNOSE 3" X 3"



ALEXANDER OVAL MOSAIC



CLOVER MOSAIC



DAYSI MOSAIC



HEXAGON MOSAIC



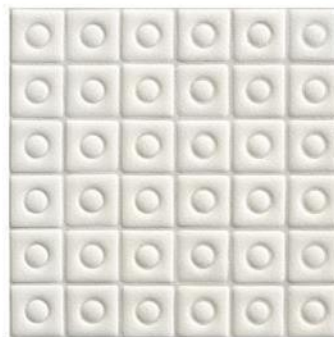
GALACTICA MOSAIC



OTTOMAN MOSAIC



REGENCY MOSAIC

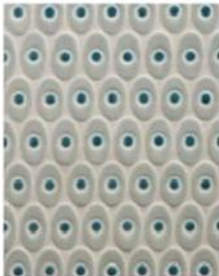


STATION MOSAIC




MONTADO EN MALLA


ALEXANDER OVAL
BLUE NOTE



DAISY | SUNSHINE



STATION | WHITE SMOKE



BLUE SHADOW POWDER BLUE WHITE GLOSS
PEACOCK BLUE YELLOW GLOSS GREY SMOKE

OTTOMAN | SAIL



OTTOMAN | BLUE SUGAR



OTTOMAN | BROWNIE



OTTOMAN | JASMINE



WHITE GLOSS BLUE SHADOW WHITE CRACKLE
PEACOCK BLUE CHOCOLATE MOJAVE

DAVID HEXAGON
CENTURY



DAVID HEXAGON
CANDY



WHITE CRACKLE WHITE GLOSS
MOJAVE MOJAVE
PEACOCK BLUE
CHOCOLATE

COLORES DE LÍNEA



WHITE MATTE



WHITE GLOSS

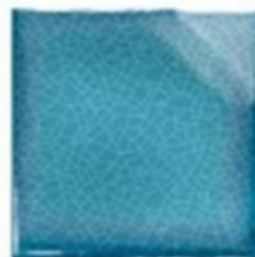
COLORES DE LÍNEA CRACKELADOS



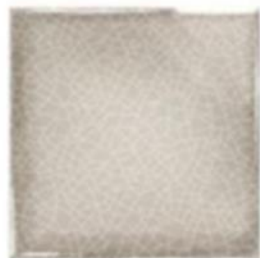
WHITE CRACKLE



BLUE SHADOW



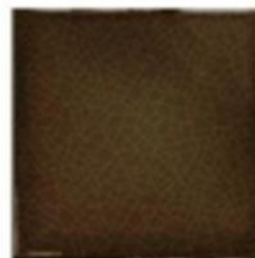
PEACOCK BLUE



GREY SMOKE



MOJAVE



CHOCOLATE



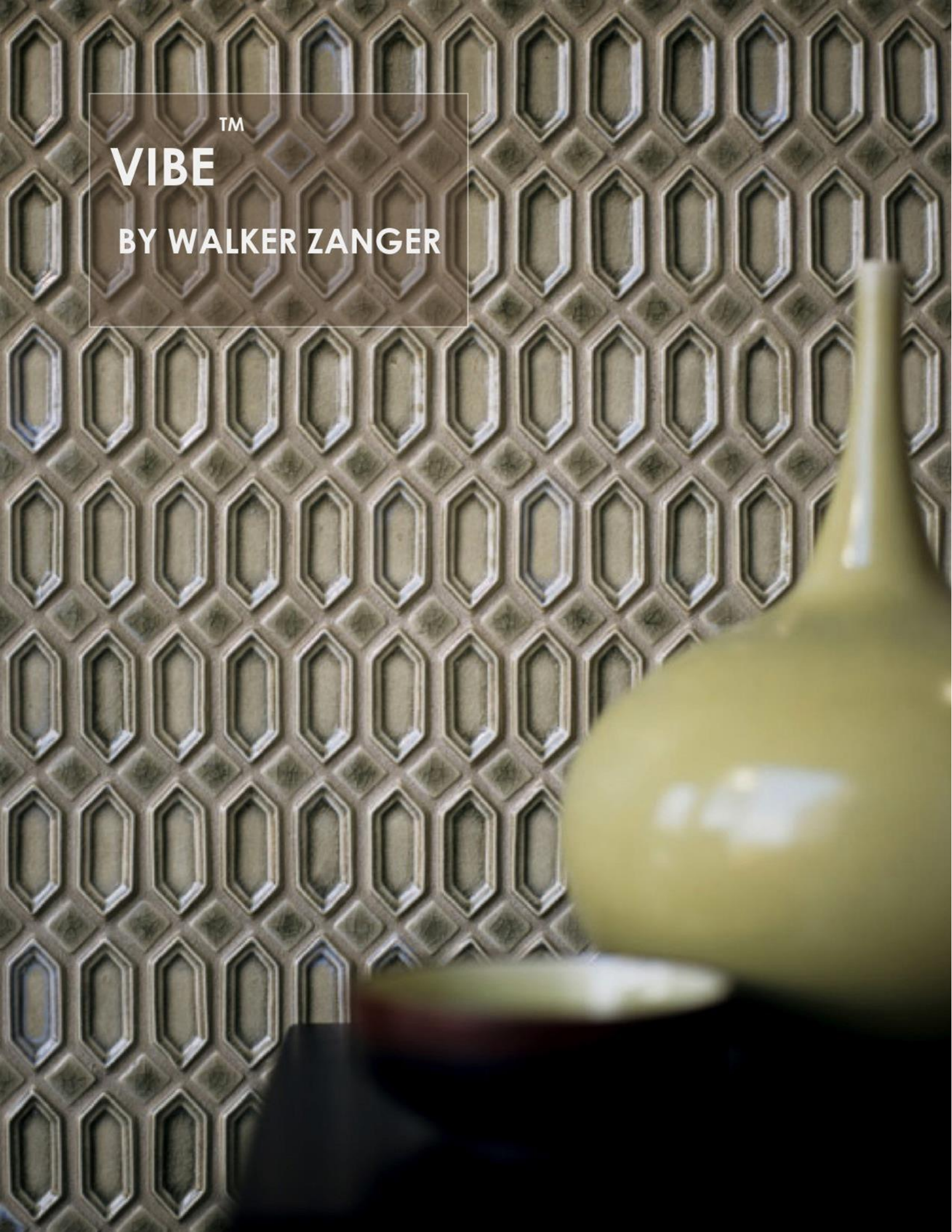
Tilt *by Walker Zanger*

LA LÍNEA ECLÉCTICA, DIVERTIDA
Y FUNCIONAL. AGREGA ESE PUNCH
DECORATIVO QUE HA DE FIRMAR
CADA GRAN OBRA.

TM

VIBE

BY WALKER ZANGER



LOSETA



FIELD TILE
3" X 4" / 78 X 105 mm

ACCESORIOS



FACET BEAK
1 1/4" / 33 mm



FACET QUARTER ROUND
1 1/4" X 6" / 33 X 152 mm



STICK LINER
3/4" X 6" / 20 X 152 mm



RAIL MOLDING
1 1/4" X 6" / 33 X 152 mm



BULLNOSE LONG
3" X 4" / 78 X 105 mm



BULLNOSE SHORT
3" X 4" / 78 X 105 mm



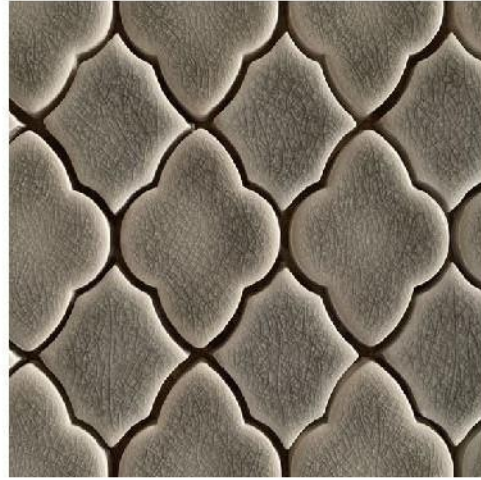
DOUBLE BULLNOSE LEFT
3" X 4" / 78 X 105 mm



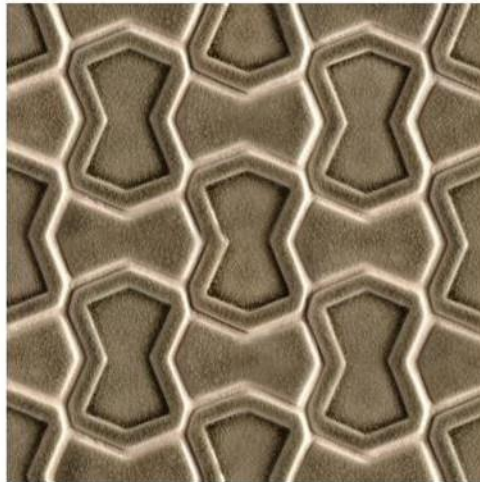
DOUBLE BULLNOSE RIGHT
3" X 4" / 78 X 105 mm



ASHBURY MOSAIC



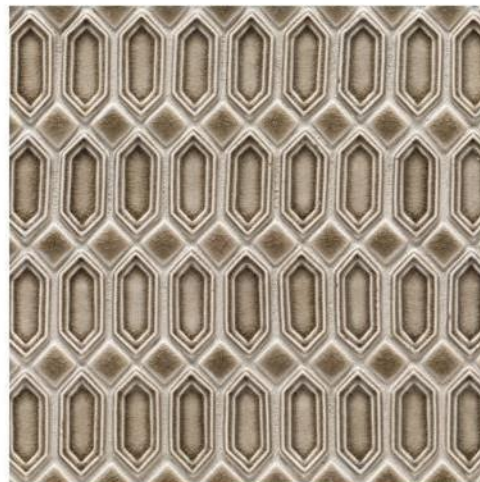
MOROCCAN MOSAIC



PARKER MOSAIC



HUSTLE MOSAIC



ODYSSEY MOSAIC

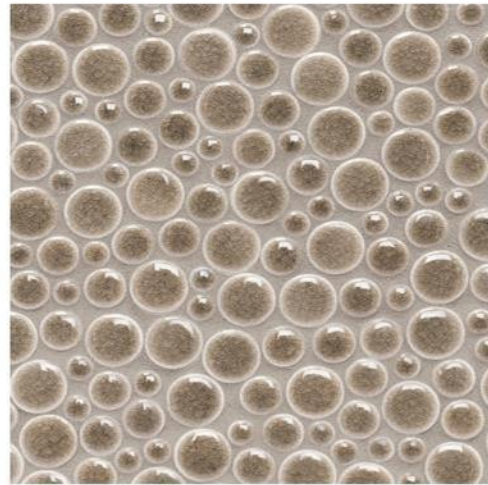


LOUNGE MIX MOSAIC

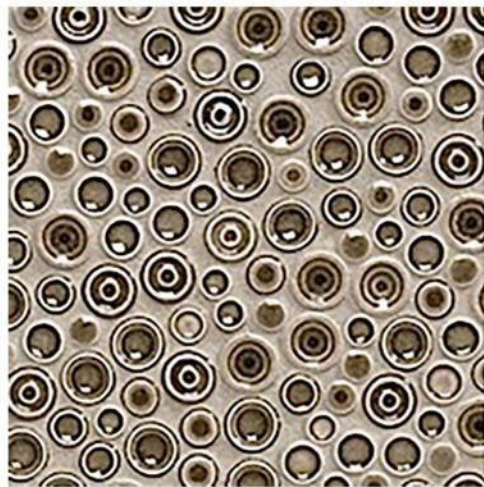
MONTADO EN MALLA



OVAL MOSAIC

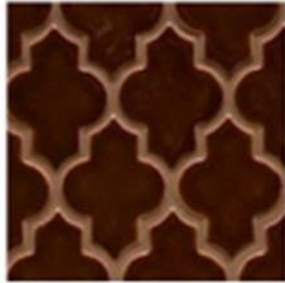


ORBIT MOSAIC



ANDY MOSAIC

COLORES DE LINEA



BOOGIE BROWN



WHITE GLOSS



SUEDE



VELVET



BLUE SHADOW



WHITE MATTE



POWDER BLUE



KEY LIME

OTRAS OPCIONES DE COLOR



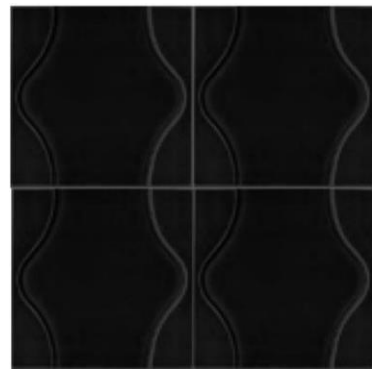
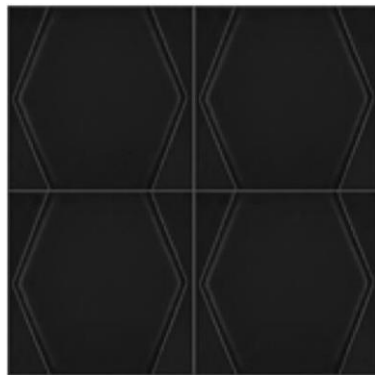
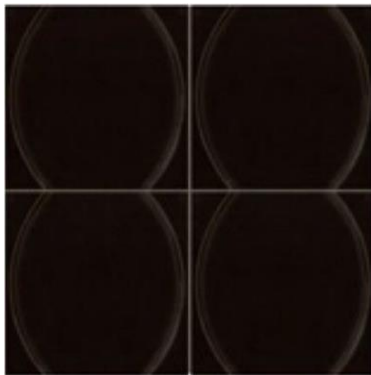
FRESH BLEND





GEOMETRICA

DECORATIVO



DECORATIVE FIELD A
6" / 152 mm

DECORATIVE FIELD B
6" / 152mm

DECORATIVE FIELD C
6" / 152 mm

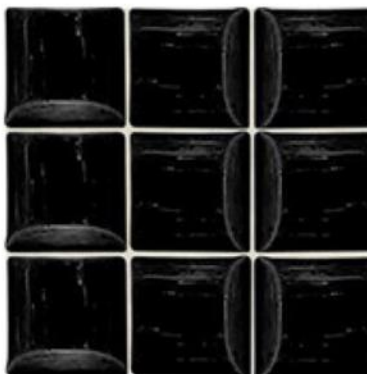


DECORATIVE FIELD D
6" / 152mm

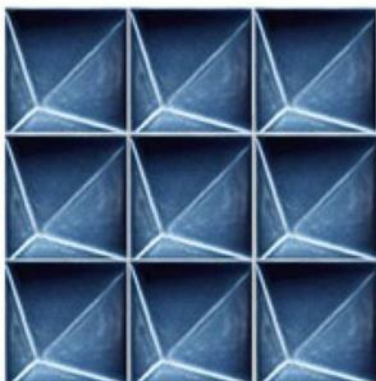
MONTADO EN MALLA



MESH MOUNTED A
2" / 50 mm



MESH MOUNTED B
2" / 50 mm



MESH MOUNTED C
2" / 50 mm



MESH MOUNTED D
2" / 50 mm

COLORES DE LINEA



NEVE GLOSS



LIQUIRIZIA GLOSS



LIMA GLOSS



CELESTE GLOSS



OCEANO GLOSS



ASH GLOSS



TABACCO GLOSS



TUILERIES

BY WALKER ZANGER



LOSETA



ARABESQUE
6" x 5 1/2"
152MM x 240MM

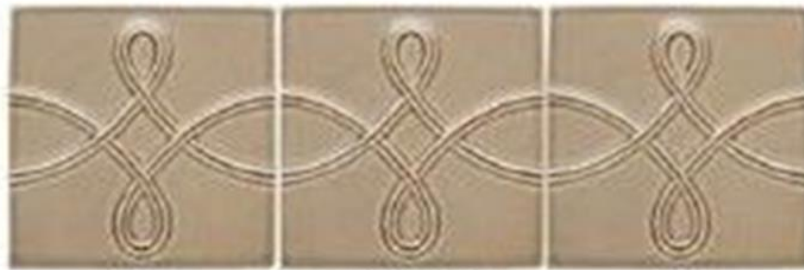


FIELD TILE
5" / 127MM



FIELD TILE
2 3/8" x 7 1/2" / 60MM x 190MM

DECORATIVO



RIVOLI DECO
5" / 127MM



MADLINE DECO
5" / 127MM



MOSAIC FIELD
2" x 3" / 51MM x 76MM



VENDOME DECO
5" / 127MM

ACCESORIOS



DOUBLE BULLNOSE
2 3/8" / 60MM



BULLNOSE SHORT
2 3/8" x 7 1/2" / 60MM x 190MM



BULLNOSE LONG
2 3/8" x 7 1/2" / 60MM x 190MM



BULLNOSE
5" / 127MM



DOUBLE BULLNOSE
5" / 127MM

ACCESORIOS

TUILERIES
BY WALKER ZANGER



BASE MOLDING AND OUTSIDE CORNER
4 3/8" x 7 1/2" / 111MM x 190MM



RAIL MOLDING AND OUTSIDE CORNER
2 1/2" x 7 1/2" / 63MM x 190MM



DECORATIVE QUARTER ROUND AND OUTSIDE CORNER
1 1/2" x 7 1/2" / 38MM x 190MM



QUARTER ROUND AND BEAK
1 1/2" x 7 1/2" / 38MM x 190MM



PEARL LINER
1/2" x 7 3/4" / 12MM x 197MM



RIVOLI BORDER
2 3/8" x 8 3/4" / 60MM x 222MM



GERMAINE BORDER
2 3/8" x 9" / 60MM x 229MM



ETOILE BORDER
2" x 10" / 52MM x 254MM



CAMILLE LINER
3/4" x 10" / 19 MM x 254MM



VENDOME BORDER
3 1/2" x 10 1/8" / 89MM x 257MM

COLORES DE LÍNEA



BLANC GLOSS



PASTIS GLOSS



MIEL GLOSS



CHAMOIS GLOSS



CHILOE GLOSS



FEDORA GLOSS



BORDEAUX GLOSS



CHOCOLAT GLOSS

COLORES CRACKELADOS



LOIRE CRACKLE



DUON CRACKLE



BRETON BEIGE CRACKLE

Tuileries





**SPANISH
COTTO**

BY WALKER ZANGER

LOSETA



BEVELLED BRICK
3" X 6"



DOT
2" X 2"



FIELD TILE
2" X 4"



FIELD TILE
2" X 6"



FIELD TILE
2" X 8"



FIELD TILE
4" X 8"



FIELD TILE
2" X 11"



FIELD TILE
4" X 13"



FIELD TILE
2" X 13"



FIELD TILE
4" X 17"



FIELD TILE
6 1/2" X 13"

ACCESORIOS



BAR LINER
1" X 6" / 25 X 160 mm



QUARTER ROUND
1" X 6" / 25 X 160 mm



STAR TREAD / SINK CAP
4" X 8" / 105 X 215 mm



BULLNOSE
4" X 4"



DOUBLE BULLNOSE
4" X 4"



BASE MOLDING
4" X 8" / 105 X 215 mm

LOSETA



FIELD TILE
4" X 4"



FIELD TILE
6" X 6"



FIELD TILE
8" X 8"



FIELD TILE
13" X 13"

LOSETA

SPANISH COTTO By Walker Zanger

cd



CROSS

3" / 70 mm
4" / 104 mm
6" / 140 mm
8 1/2" / 215 mm



STAR

3" / 70 mm
4" / 104 mm
6" / 140 mm
8 1/2" / 215 mm



OCTAGON a

8 1/2" / 215 mm



OCTAGON b

6" / 140 mm
8 1/2" / 215 mm
10" / 260 mm



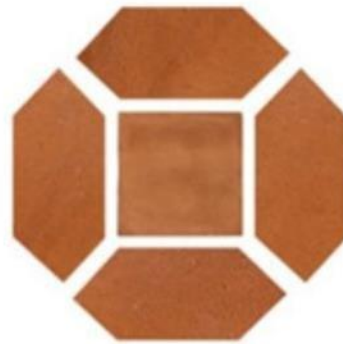
HEXAGON

3" / 76 mm
4" / 105 mm
6" / 150 mm
8" / 213 mm
12" / 345 mm



TRIANGLE

1 1/2" / 37 mm
2" / 53 mm
3" / 78 mm
4" / 115 mm
6" / 162 mm



PICKET

2" / 42 X 92 mm
4" / 103 X 213 mm
6" / 160 X 327 mm



ARABESQUE

6" / 150 mm
12" / 333 mm



CHEVRON

3 1/2" X 15 3/4" / 90 X 405 mm



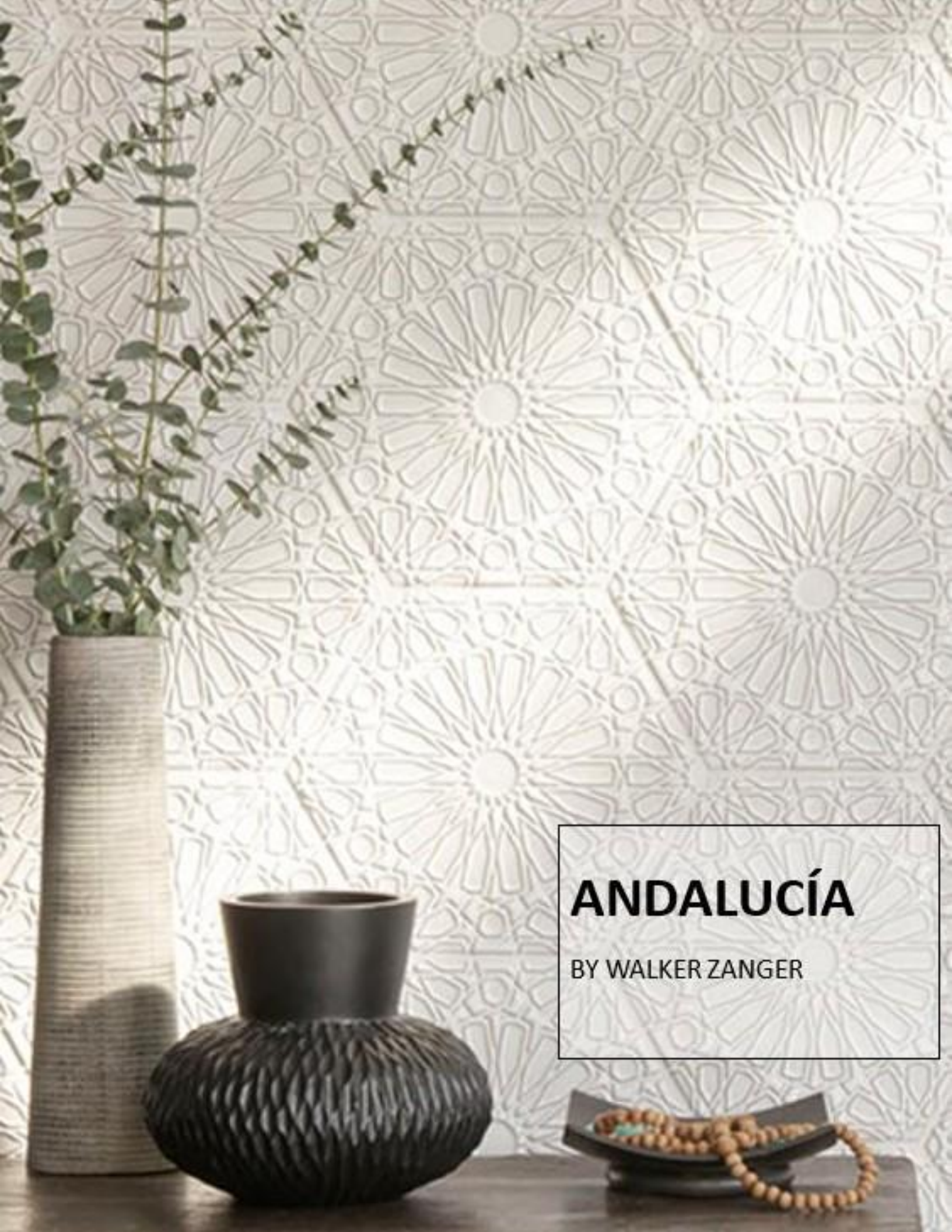
RHOMBOID

6 X 13 1/2" / 160 X 343 mm

Spanish *by Walker Zanger*

INTEGRAMENTE MOLDEADA A MANO,
DA BELLEZA, ALTA DURABILIDAD
Y LA CLÁSICA SENSACIÓN
DE UN TERRACOTA ANTIGUO.





ANDALUCÍA

BY WALKER ZANGER

LOSETA



FIELD TILE
2" / 51 mm



FIELD TILE
2 X 6" / 51 X 152 mm



FIELD TILE
6" / 152 mm



FIELD TILE
6 X 12" / 152 X 305 mm

ACCESORIOS



BEAK
1" / 25 mm



QUARTER ROUND
1 X 6" / 25 X 152 mm



BULLNOSE
2" / 51 mm



BULLNOSE SHORT
2 X 6" / 51 X 152 mm



DOUBLE BULLNOSE
2" / 51 mm



BULLNOSE LONG
2 X 6" / 51 X 152 mm



BULLNOSE
6" / 152 mm



BULLNOSE SHORT
6 X 12" / 152 X 305 mm



DOUBLE BULLNOSE
6" / 152 mm



BULLNOSE LONG
6 X 12" / 152 X 305 mm

DECORATIVO



ALHAMBRA
6" / 152 mm



MEZQUITA
6" / 152 mm



SEVILLA
6" / 152 mm



ALCAZAR
6" / 152 mm



SAN MIGUEL
6 X 10" / 152 X 254 mm

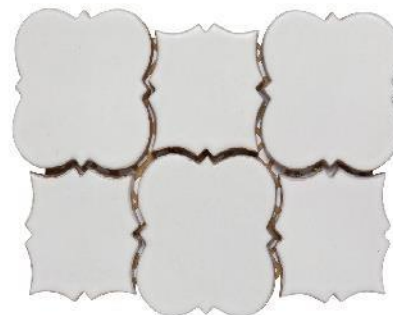


PUERTA
10" / 254 mm

MONTADO EN MALLA



ARABESQUE MOSAIC
6" / 152 mm



CORDOBA MOSAIC
6" / 152 mm

DECORATIVO



MARRAKECH
10" / 254 mm



FEZ
10" / 254 mm



HEXAGON FIELD TILE
10" / 254 mm

COLORES DE LINEA



BLANCO MATTE



BLANCO GLOSS



ATLANTICO MATTE



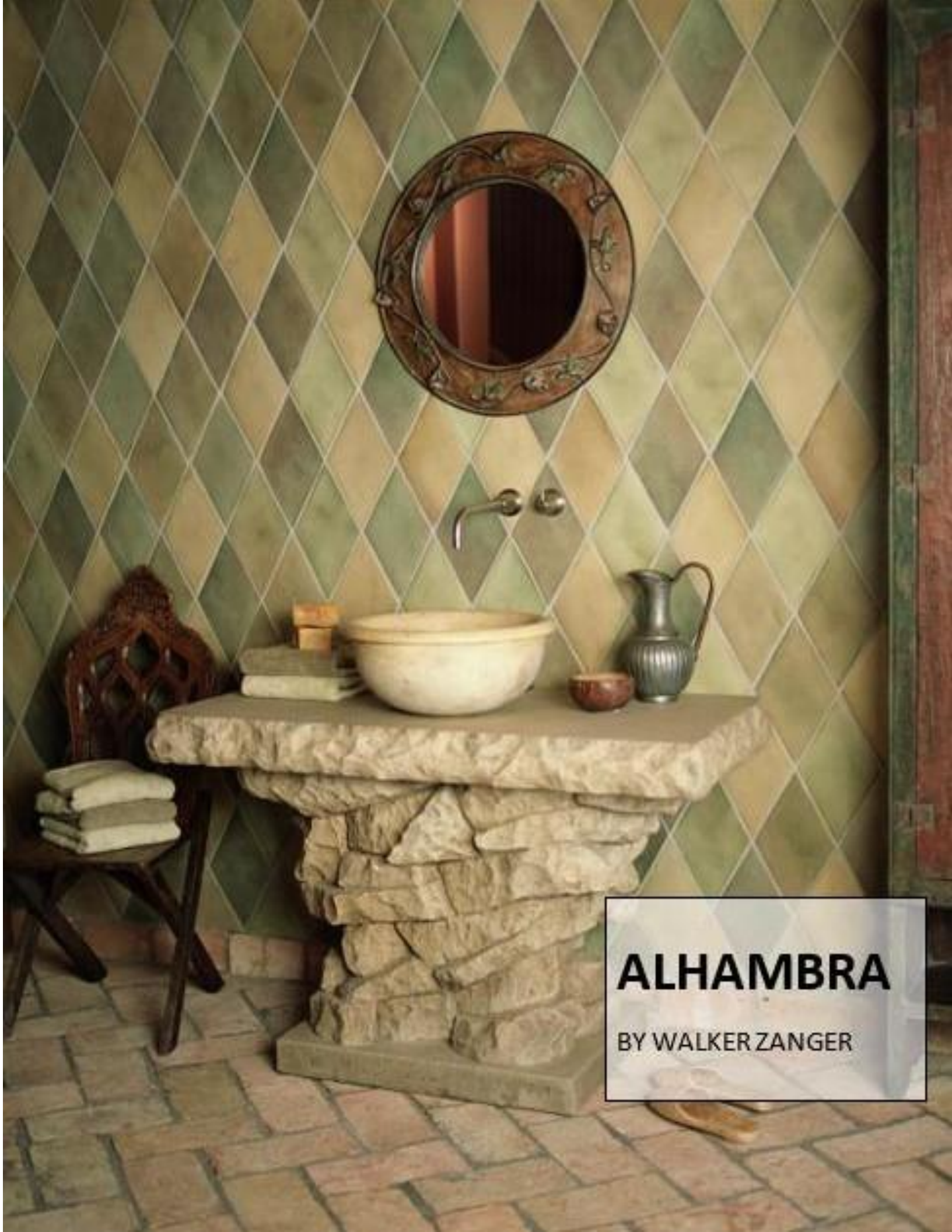
MARINO MATTE



AGAVE MATTE



AZURE MATTE



ALHAMBRA

BY WALKER ZANGER



BATCHELDER BLEND RHOMBOID



LOSETA

MONTECITO BLEND RHOMBOID



BATCHELDER BLEND MOSAIC
2" / 55 mm



MONTECITO BLEND MOSAIC
2" / 55 mm



BATCHELDER BEVELLED BRICK
3" X 6" / 76 X 160 mm



MONTECITO BEVELLED BRICK
3" X 6" / 76 X 160 mm



BATCHELDER BLEND HEXAGON
6" / 160 mm

DECORATIVO

ACCESORIOS



BULLNOSE
4" / 105 mm



DOUBLE BULLNOSE
4" / 105 mm

LOSETA



FIELD TILE
6" / 160 mm



OCTAGON
6" / 160 mm



HEXAGON
6" / 160 mm



FIELD TILE
8" / 215 mm



DOT
2" / 55 mm



BRICK
2 X 4" / 55 X 105 mm



FIELD TILE
2 X 6" / 55 X 160 mm



BEVELLED BRICK
3" x 6" / 76 x 160 mm



FIELD TILE
4" / 105 mm

ACCESORIOS



RAIL FRAME CORNER



RAIL MOLDING
1 1/2" X 5 3/4" / 38 X 146 mm



RAIL OUTSIDE CORNER



CORNICE FRAME CORNER



CORNICE MOLDING
2 1/2" X 5 3/4" / 63 X 146 mm



CORNICE OUTSIDE CORNER



BAR LINER
1" X 6" / 25 X 160 mm



BEAK
1" / 25 mm



QUARTER ROUND
1" X 6" / 25 X 160 mm



STAIR TREAD / SINK CAP
4" X 8" / 105 X 215 mm



ACCESORIOS



AVILA DOT
2" / 50 mm



ARENA DOT
2" / 50 mm



SAFI DOT
2" / 50mm



FEZ DOT
2" / 50mm



CADIZ DOT
2" / 50mm



MOORISH BORDER
4" / 105 mm



MARBELLA BORDER
4" / 105 mm



ALGIERS BORDER
4" / 105 mm



MADRID BORDER
4" / 105 mm



TANGIERS BORDER
4" / 105 mm



SAN VICENTE BORDER
4" / 105 mm



DOMENICO LINER
2" x 6" / 50 x 160 mm



DUQUESA LINER
2" x 6" / 50 x 160 mm



SAN MIGUEL LINER
2" x 6" / 50 x 160 mm



VERDE HOJAS LINER
2" x 6" / 50 x 160 mm



MUDEJAR LINER
2" x 6" / 50 x 160 mm



TUNIS LINER
2 X 6" / 50 X 160 mm



VITERRO LINER
2 X 6" / 50 X 160 mm



FEZ LINER
2" x 6" / 50 x 160 mm



PUMAS LINER
2 X 6" / 50 X 160 mm



BAHÍA LINER
2 X 6" / 50 X 160 mm

ACCESORIOS



ALAMEDILLA DECO
4" / 105 mm



CUEVAS DOT
2" / 50mm



TARIFA DOT
2" / 50mm



ALAMEDILLA BORDER
4" / 105 mm



SAN ROQUE LINER
2" x 6" / 50 x 160 mm



VELEZ LINER
2" x 6" / 50 x 160 mm



AGADIR BORDER
4" / 105 mm



CASTILE LINER
2" x 6" / 50 x 160 mm



MARRAKECH LINER
2" x 6" / 50 x 160 mm



CHAPARRAL BORDER
4" / 105 mm



SEVILLE LINER
2 X 6" / 50 X 160 mm

COLORES DE LÍNEA



PERLA



PAJA



TRIGO



NIEVE



UVAS



LAPIZ AZUL



ADOBE



RIVER ROCK



SAGEBRUSH



Alhambra™ *by Walker Zanger*

BALANCEADO TOQUE
DE ARTESANÍA TRADICIONAL,
CON FORMAS Y COLORES IDÓNEOS
PARA VESTIR ESPACIOS
INSPIRADOS EN EL PASADO.



CITY BRICKS™

By Walker Zanger

ACCESORIOS



BULLNOSE LONG (DEMI)
1 1/2" X 9"

LOSETA



BRICK
2 X 6" / 50 X 152 mm



BRICK
3 X 9" / 76 X 229 mm

COLORES DE LÍNEA



STREET LIGHT MATTE



STREET LIGHT GLOSS



IVORY GLOSS



SUBWAY GLOSS



OATMEAL GLOSS



BROWNSTONE GLOSS



SKYSCREAPER GLOSS



BLACK MATTE



BLACK GLOSS



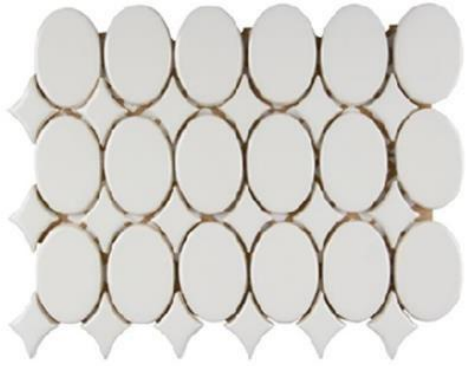
SIDEWALK GLOSS

KIVA

By Walker Zanger



MONTADO EN MALLA



TWINKLE MOSAIC
8 1/8" X 10 3/4" / 206 X 273 mm



FAN MOSAIC
7 5/8" X 8 3/8" / 193 X 213 mm

ACCESORIOS



PEAK LINER
9/16" X 8 1/2" / 13 X 216 mm



8" DEMI BULLNOSE
9/16" X 8" / 14 X 205 mm

LOSETA



2" X 6" BRICK
2" X 6" / 13 X 216 mm



6" PICKET
2 5/8" X 6 1/8" / 66 X 154 mm



4" TRIANGLE
4" X 4" / 103 X 103 mm



8" DIAMOND
4 1/8" X 8 5/16" / 105 X 212 mm

COLORES DE LÍNEA



WHITE SANDS GLOSS



DAWN GLOSS



CANYON GLOSS



MESA GLOSS



OASIS GLOSS



LUNAR GREY GLOSS



CAMVAS GLOSS



BONE CHINA CRACKLE



PASTIS GLOSS



BRETON BEIGE CRECKLE



BISCUIT GLOSS



DIJON CRACKLE



CHILOE GLOSS



LEMON GRASS GLOSS



PIPE SMOKE CRECKLE



PEWTER GLOSS



BROWNSTONE CRACKLE



FEDORA GLOSS



FLAX MATTE



FLAX GLOSS



KEY LIME GLOSS



GRASS GLOSS



BLANC GLOSS



COTTONTAIL MATTE



WHITE GLOSS



FROSTING MATTE



SNOW MATTE



REEF CLAY GLOSS



WHITE MATTE



FROST CRACKLE



FOG GLOSS



FOG MATTE



WENGWOOD BLUE
CRACKLE



OXFORD GLOSS



FRENCH CLAY GLOSS



RIVER MINT GLOSS



ICE BLUE GLOSS



MARLIN BLUE GLOSS



PALE SKY GLOSS



LOIRE CRACKLE



CAPE COD CLOSS



SALTBUSH GLOSS



CHOCOLAT GLOSS



DEEP SEA GLOSS



BLACK GLOSS



BLACK MATTE



CANVAS MATTE



BOSTOM CREAM GLOSS



KHAKI GLOSS



HAMPTONS BEIGE
CRACKLE



LINEN GLOSS



SAND GLOSS



CHAMOIS GLOSS



HONEYCOMB MATTE



SUMMER DREAM
GLOSS



HONEY BEE GLOSS



CARNABY GLOSS



MIEL GLOSS



SPANISH GOLD GLOSS



VELVET SAGE GLOSS



GREEN TEA GLOSS



BANGALAY GLOSS



ALOE GLOSS



WOODLAND GLOSS



KEY LIME MATTE



SAGE GLOSS



VICTORIA STATION
GLOSS



OLIVER GREEN GLOSS



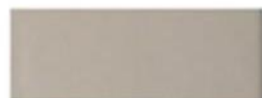
GRASS MATTE



HIGHLANDS GEEN
GLOSS



WEDGETAIL GLOSS



GOING GREY GLOSS



MANHATTAN MATTE



ELEPHANT MATTE



GREY HERON GLOSS



FEDORA MATTE



WALNUT CRACKLE



BARK GLOSS



CAPE COD MATTE



SHITAKE GLOSS



STERLING MATTE



ECLIPSE GLOSS



HORIZON CRACKLE



STEEL GLOSS



STERLING GLOSS



CARBON GREY GLOSS



BALLET SUPPER GLOSS



BLUSH GLOSS



LILLY PILLY GLOSS



TAFFY GLOSS



ESPRESSO CRACKLE



BENEDICT BROWN GLOSS



GINGERBREAD GLOSS



BORDEAUX GLOSS



LICHEN GLOSS



TIDEPOOL GLOSS



CELESTE GLOSS



JULEP GLOSS



SOMETHING BLUE GLOSS



AQUAMARINE GLOSS



MOONSTONE GLOSS



PALE SKY MATTE



MIAMI BLUE GLOSS



OPAL GLOSS



MANGROVE GLOSS



MARLIN BLUE MATTE



BLUE NOTE GLOSS



BALMORAL GLOSS



CHARETTE GLOSS



BLUE MOON GLOSS



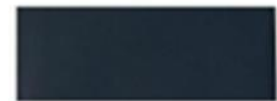
SPRUCE GLOSS



JUNIPER GLOSS



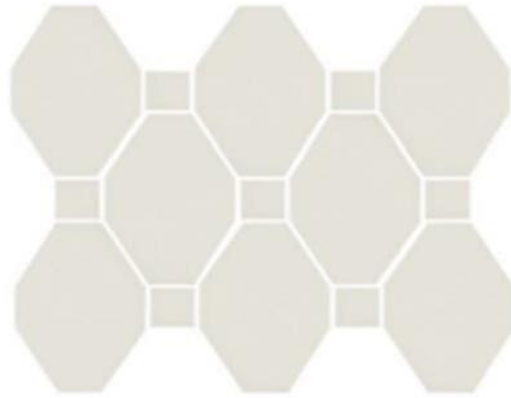
NAVY GLOSS



STARRY NIGHT GLOSS

MONTADO EN MALLA

FORMATOS CUSTOM



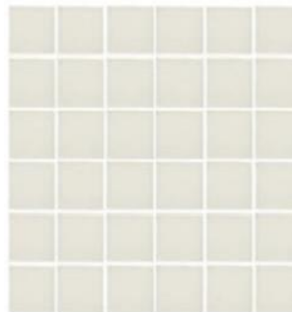
RHOMBI MOSAIC



CONVEX BRICK
10-1/2" X 10-1/2"



TEAR DROPS
10-1/2" X 10-1/2"



MOSAIC 1" X 1"



MOSAIC 2" X 2"

LOSETA



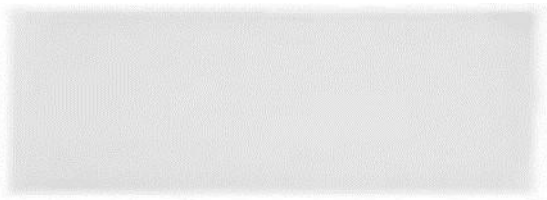
BEVELLED MOORISH REVIVAL
6" X 6"



1X3" SQUARE EMBOSSED



1X3" ROUND FLAT



FIELD TILE
3" x 9" / 80MM x 228MM



SQUARE EMBOSSED
3" x 9" / 76MM x 229MM

DECORATIVO



HEXAGON "A"



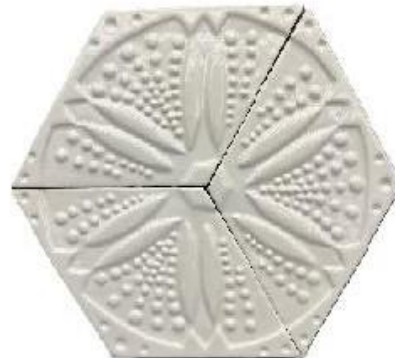
HEXAGON "B"



HEXAGON "C"



HEXAGON "D"



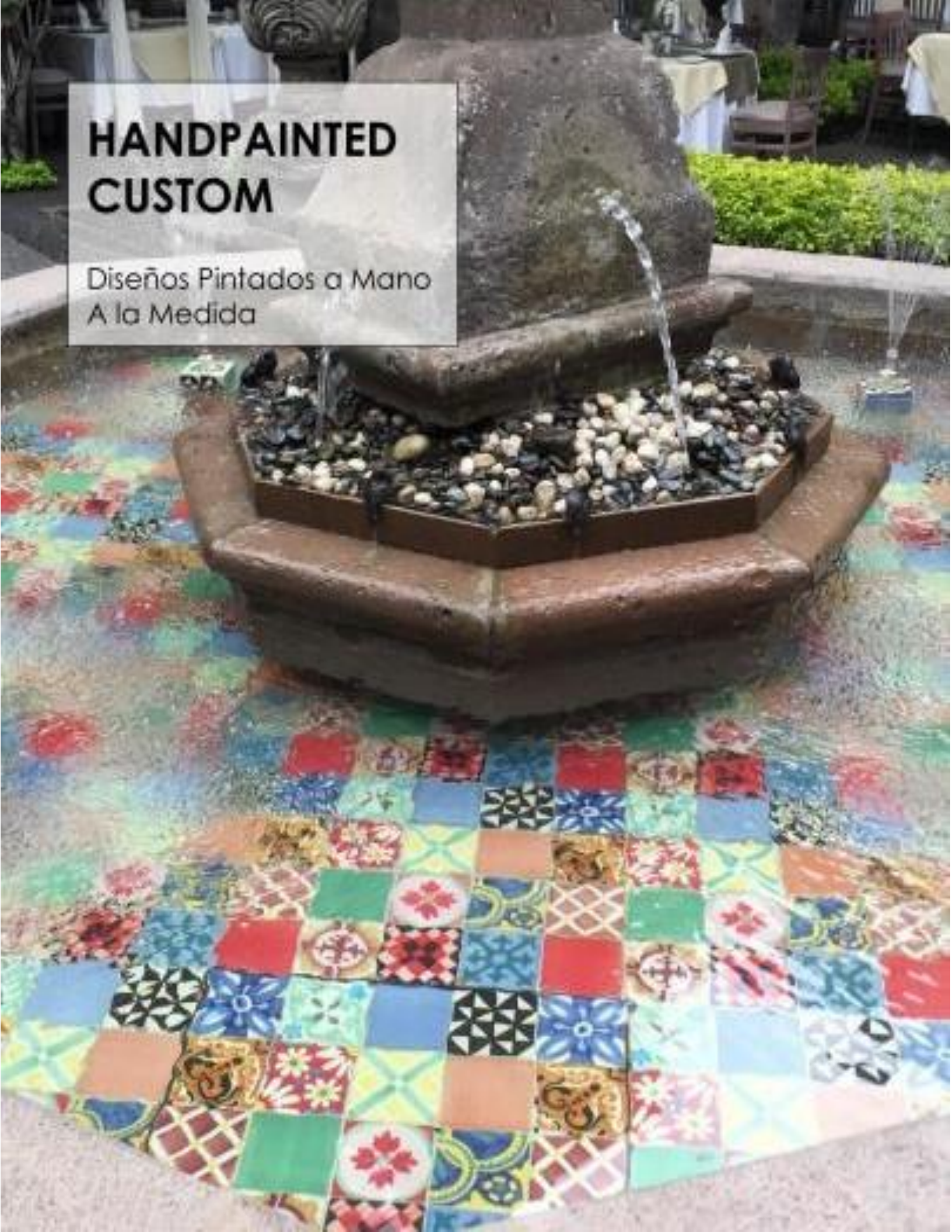
HEXAGON "E"



HEXAGON "F"

HANDPAINTED CUSTOM

Diseños Pintados a Mano
A la Medida



LOSETA

FORMATOS HAND PAINTED CUSTOM



FIELD TILE
4" / 105 mm



FIELD TILE
6" / 160 mm



FIELD TILE
8" / 215 mm

PALETA DE TONOS HAND PAINTED

CONSTELACION R3-12	GROTTO R2-12	BURGOS Q4-14	BASENJI 307-07	CAVERNA 314-06	OAXACA E2-14
PANDANUS O28-05	BANGKOK 04-12	AZOR 312-08	HELENICO 187-07	COMORES 274-03	ENSALADA 224-07
POZOLE 063-07	MUELLE 15-12	COSTA DEL SOL 11-13	NUIT 165-07	PEREJIL 219-07	NAUTILUS 180-07
MICROFONO 312-03	SALIBOA Q4-10	FONTANA L5-07	WATU 079-05	ARCANO 303-04	PERLA NEGRA 196-06
BURDEOS 099-07	SHOW S4-11	DESTELLO 022-05	MELOS 163-05	SERPIENTE 228-07	BARRO NEGRO 314-07
LEJANO 038-05	KAJHLO L3-09	PORTICO 212-02	AGORA 168-04	SOMBRA 05-11	ESQUIMAL 185-04
MARMOL H5-04	GERANIO B3-11	COCADA H3-14	RETINTO 263-07	JAMAPA 278-01	MUEGANO R3-10
APACIBLE 154-03	SALINERO 264-07	ECO DE MUSA 231-05	VERONA 095-04	ACERO R5-09	

RANGO DE PRECIOS POR COLECCIÓN 2025

COLECCIÓN	LOSETA		MONTADO EN MALLA / DECORATIVO		ACCESORIOS	
	PRECIO POR M2 DESDE	HASTA	PRECIO POR M2 DESDE	HASTA	PRECIO POR PZ DESDE	HASTA
6TH AVENUE	\$1,179.00	\$1,874.70	\$1,529.60	\$2,633.60	\$33.60	\$141.60
ATMOS	\$1,579.50	\$2,053.80	\$1,884.00	\$2,942.40	\$104.80	\$136.00
PIETTA DONOVAN	\$1,276.20	\$1,908.90	N/A	N/A	\$44.00	\$141.60
ROBERT STERN	\$1,372.50	\$2,526.30	\$1,703.20	\$3,046.40	\$48.00	\$335.20
STUDIO MODERNE	\$2,120.40	\$3,246.30	\$4,016.00	\$6,158.40	\$75.20	\$614.40
GEOMETRICA	N/A	N/A	\$2,137.60	\$3,364.00	N/A	N/A
TILT	\$1,831.50	\$2,380.50	\$3,104.80	\$5,957.60	\$74.40	\$145.60
VIBE	\$2,503.80	\$2,503.80	\$1,895.20	\$7,092.80	\$97.60	\$148.80
SPANISH	\$1,199.70	\$4,299.30	N/A	N/A	\$41.60	\$174.40
ALHAMBRA	\$2,252.70	\$4,173.30	\$3,598.40	\$4,816.00	\$59.20	\$200.00
ANDALUCIA	\$1,774.00	\$2,589.00	\$2,300.00	\$4,326.40	\$37.60	\$201.60
CITY BRICK	\$1,800.90	\$2,339.10	N/A	N/A	\$49.60	\$118.40
KIVA	\$1,337.40	\$1,898.10	\$1,839.20	\$2,575.20	\$53.60	\$78.40
TUILERIES	\$1,925.10	\$6,041.70	\$1,790.40	\$3,344.00	\$48.80	\$220.80
HANDPAINTED	N/A	N/A	\$4,581.60	\$5,459.20	N/A	N/A

- Rangos con vigencia 2025, y están sujetos a cambios sin previo aviso.
- Precios no incluyen IVA.
- Precios no incluyen envío (precios puestos en fabrica Dolores Hidalgo, Gto).
- Toda orden de compra se considera en firme con un anticipo del 50%.

Por el carácter artesanal y único de las colecciones, los tiempos de entrega son variables de entre 4 y 12 semanas, según la colección, formato o tamaño de proyecto.



CONTACTO

contacto@ceramicaantique.com

Tel: **418-182-7600 EXT. 122**

Montelongo Lateral del Ferrocarril #10, Dolores Hidalgo C.I.N., Gto.

www.ceramicaantique.mx

